



NEW

SPEAKER

**CONNECTOR
SERIES**

SPK 4-8 PIN

SSX 16 PIN

SVK 19 PIN

syntax

no compromise

SPK SPEAKER



SYNTAX® Speaker connectors are available in 4, 8, 16 and 19 pin configuration for speaker array connections.

Available models:

SPK 4 pin - SPK 8 pin - SVK 19 pin

SPK and SVK are compliant with Mil C 5015 VG 95234 and are commonly used by many speaker enclosure manufacturers. They are available with rubber-covered or metal locking rings. SPK connectors are fully intermateable with CA-COM connectors.

SSX 16 pin - SSX 19 pin

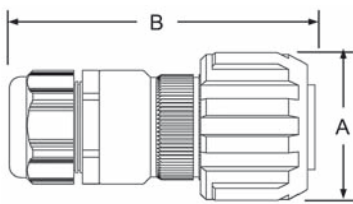
SSX connectors are fully intermateable with Socapex 419 Series and are available with heavy duty locking rings.

All Syntax Speaker connectors are available with gold or silver plated contacts. The Syntax Speaker connectors were designed to address the shortcomings that legacy industrial and military connectors have when used in touring applications. All models are IP67 when mated.

- Rubber Coated Locking Rings (on SPK/SVK)
- Machined Backshells
- Thick Wall sections
- Roller Bearing Coupling Pins (on SPK/SVK)
- IP67 watertight construction when mated
- Compliant Integral Grounding System

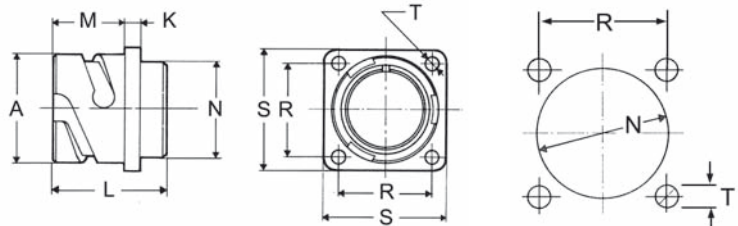
INLINE DIMENSIONS (mm) 4 - 8 - 19 pin

terminal	A	B	Pin
aluminium locking ring	37	106	4
aluminium locking ring	45	107,3	8
aluminium locking ring	45	107,3	19
rubber locking ring	49	110	4
rubber locking ring	56	107,3	8
rubber locking ring	56	107,3	19
ramps	34	108	4
ramps	40	105,75	8
ramps	40	105,75	19



PANEL DIMENSIONS (mm) AND CUT-OUT 4 - 8 - 19 pin

	A	K	L	M	N	R	S	T
	+0			+0,4				
	-0,15	±0,2	±0,3	-0	max.	±0,1	±0,3	H13
4 pin	30,8	4	34,3	19	25,6	27,0	35	3,2
8 pin	37,4	4	34,3	19	32,2	31,8	41	3,2
19 pin	37,4	4	34,3	19	32,2	31,8	41	3,2



CONTACTS

The male and female are machined by high conductive copper alloy and could be supplied gold or silver plated.

Voltage rating AC	Voltage rating DC	Max current	Rated current	Potential drop	Dielectric Strength	
					Test voltage	Min. Flashover
1250 V	900 V	41 Amps	23 Amps	63 mV	2800 Vac RMS	3600 Vac RMS

SOLDER CONTACTS TYPES AND PART N.

Size	Connector	Plating	Part N.	Gender	Part N.	Gender
12	SPK 4-8 pin	Silver	SPKP12SFS	Female	SPKP12SMS	Male
			SPKP12GFS	Female	SPKP12GMS	Male
		Gold				

CRIMP CONTACTS TYPES AND PART N.

Size	Connector	Plating	Part N.	Gender	Part N.	Gender
16	SPK 19 pin	Silver	SVKP16SFC	Female	SVKP16SMC	Male
			SVKP16GFC	Female	SVKP16GMC	Male
		Gold				

8 PIN

SPK008FV - SPK008MV



8 pin inline female and male with ramps

SPK008MV - SPK008FV



8 pin inline male and female with aluminium locking ring

SPK008FV - SPK008MV



8 pin inline female and male with rubber locking ring

SPK008FP - SPK008MP



8 pin panel female and male with aluminium locking ring

SPK008MP - SPK008FP



8 pin panel male and female with ramps

SVK019MV - SVK019FV



19 pin inline male with ramps and female with rubber locking ring

SVK019MP - SVK019FP



19 pin panel male with ramps and female with aluminium locking ring

19 PIN

SPK004FV - SPK004MV



4 pin inline male and female with ramps

SPK004MP - SPK004FP



4 pin panel male and female with ramps

SPK004FV - SPK004MV



4 pin inline male and female with rubber locking ring

SPK004FP - SPK004MP



4 pin panel female and male with rubber locking ring

4 PIN

SPK SPEAKER

LOCKING RING

ALUMINIUM
locking ring.



RUBBER COATED
locking ring for ease
of coupling even with
gloved hands.



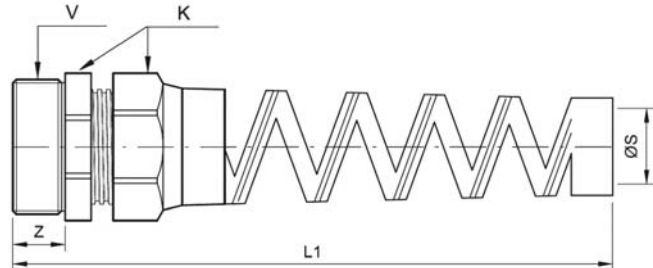
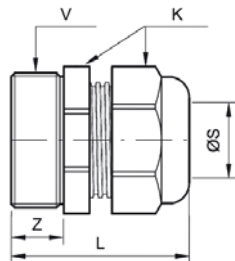
NEW RUBBER COATED
LOCKING RING FOR
8 AND 19 PIN
CONNECTORS

RUBBER COATED
locking ring for ease
of coupling even with
gloved hands.



FOR 4 PIN
CONNECTORS

CABLE GLANDS



CABLE CLAMP METRIC (dimensions in mm)

V (Thread Size)	Ø S (Clamping Range)		K	Z	L	L1
M 32 x 1.5	7 - 15	Reduced	36	10	47	149
M 32 x 1.5	11 - 21	Normal	36	10	47	149
M 32 x 1.5	18 - 25	Oversize	36	10	47	149

PROTECTION DUST CAPS



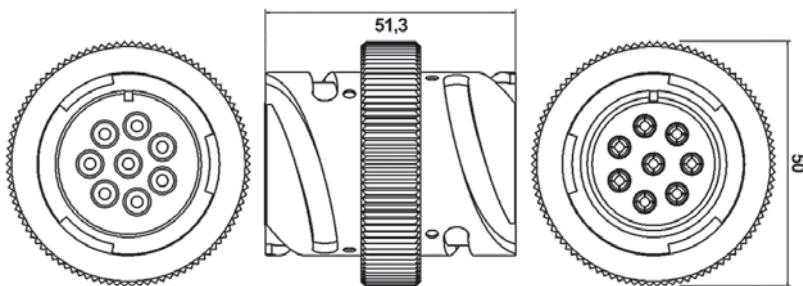
SPK...TFSC - Protection dust cap for female connector



SPK...TMSC - Protection dust cap for male connector



For 8 pin speaker extension cable - Part N. SPK008ADIV



GENERAL FEATURES

- Compatible with Syntax SPK 8 pin Speaker connector, CACOM8 and all other series with insert 22-23 (8 pins) compliant with MIL C5015 & VG95234 standards.
- Allows users of SPK 8 pin to create longer extensions.
- Heavy duty aluminum body for maximum durability.
- Obtained through machining of aluminum special alloy.

DESCRIPTION

SPK 8 pin Speaker adapter for extension cable male to female without locking rings

TYPICAL APPLICATION

The SPK 8 pin Speaker extension cables (CA-COM 8 compatible) typically feature a male connector at one end and a female connector at the other end, with locking rings on both terminations to allow the connection to panel mount devices without locking rings. Such configuration prevents the possibility of joining multiple cables and make longer extensions.

SPK 8 pin Speaker adapter permits the connection of more extension cords together.

The male and female connections of the SPK 8 pin Speaker adapter are without locking rings.

This allow users to extend the length of a SPK 8 pin Speaker cable by joining two existing cables with locking rings together.

TYPICAL ENVIRONMENTS & MARKETS

Theatres, PA (concert touring) applications, live events, permanent installations.

SPECS

Pin/Socket	Size 12
Input / Output	Inlet Without Ring / Receptacle Without Ring

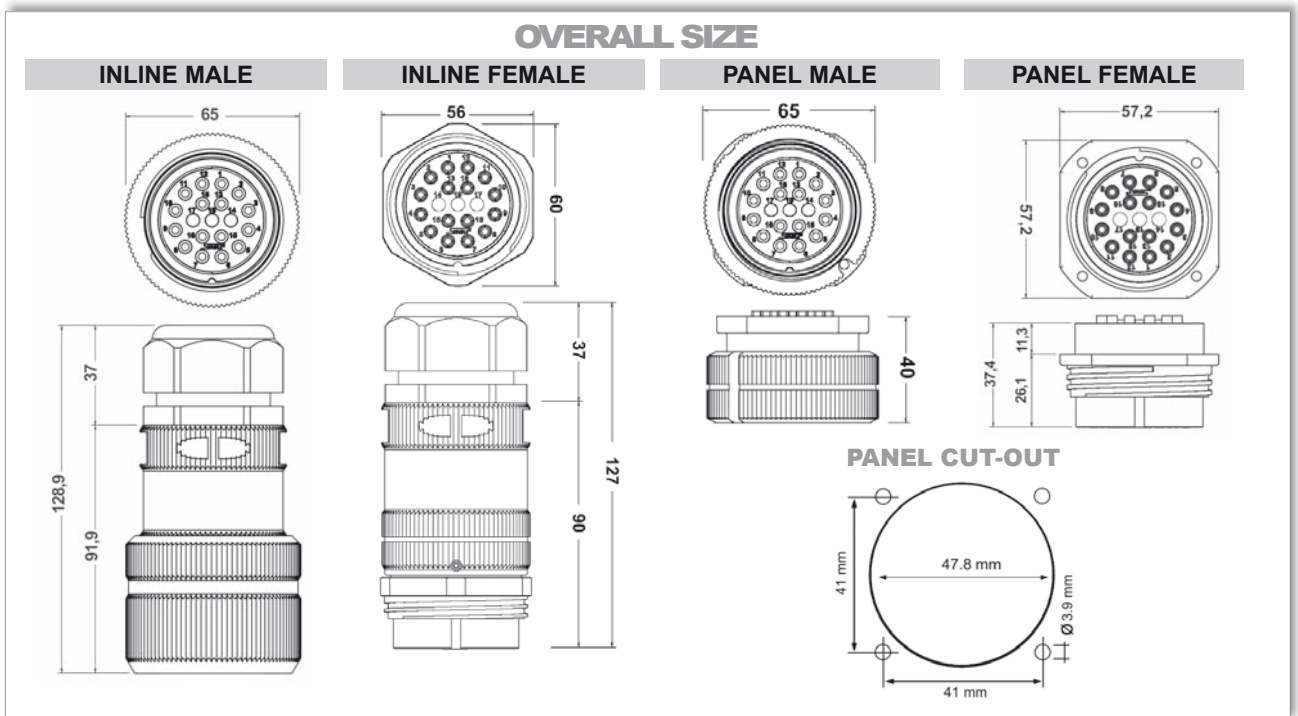


SSX 16 PIN



16 pin Connector

This special version of the SSX19 PIN connector is specifically used in Speaker applications. It is supplied with 16 contacts and 3 anti-dust blind pins. The standard version with 19 pins is also available

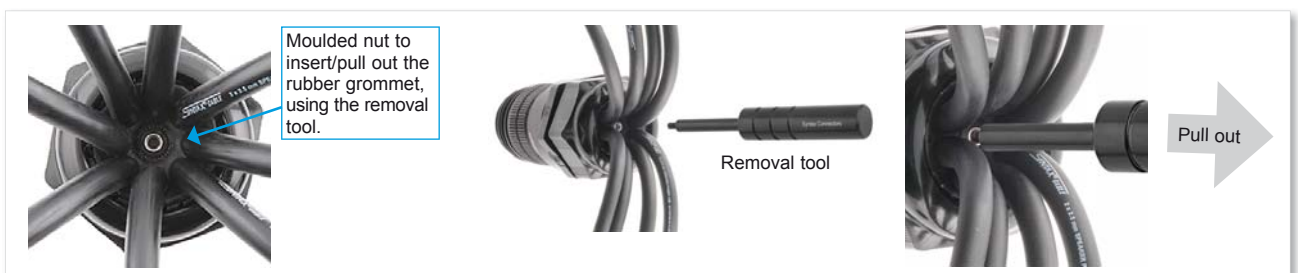


SPIDER SSX 16 PIN



WITH 8-HOLE GROMMET

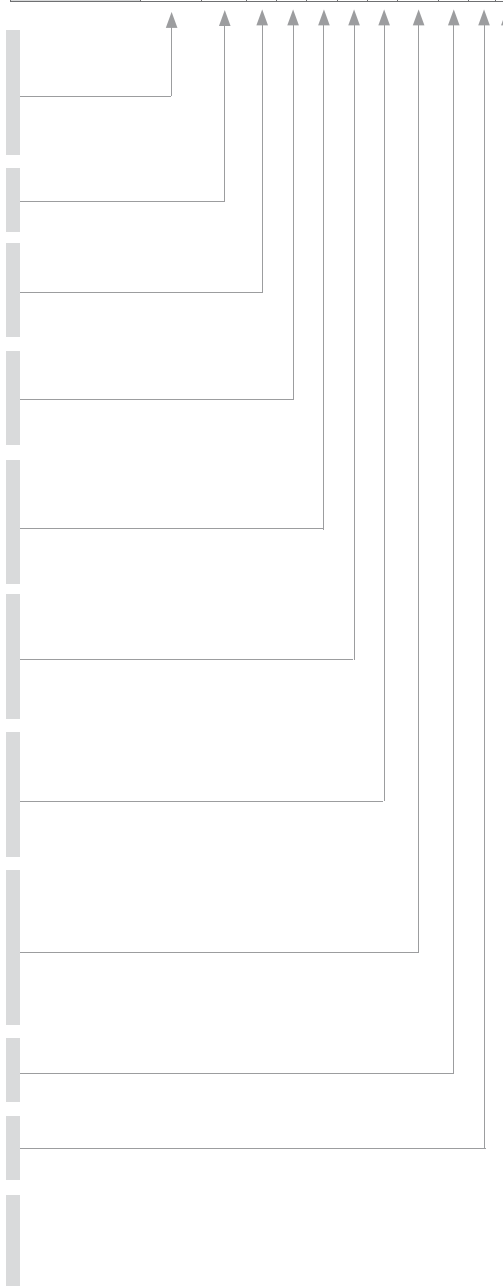
SYNTAX® SSX SPIDER 16 pin connector is an alternative version of the SSX 16 pin standard inline connector, designed for quick and easy managing of breakout applications. The Syntax proprietary 8-way rubber grommet, fitted in the cable gland terminal, guarantees optimal cable retention and IP67 watertight seal for outdoor use. For breakout assemblies with 8 cable leads, the usage of **SYNTAX® MAINFLEX** cable is recommended for full IP67 waterproof protection and best handling.



SPEAKER SERIES - PART NUMBER EXPLANATION

Part N.															
EXAMPLE Part N.	SPK	008	F	V	R	G	S	MN	N						

CONNECTOR SERIES	
SPK = (4-8 PIN compliant Mil C5015 & VG95234)	SPK
SSX = (16 PIN Socapex 419 compatible)	SSX
SVK = (19 PIN compliant Mil C5015 & VG95234)	SVK
NUMBER OF CONTACTS	
004 - 008 - 016 - 019	...
CONTACT TYPE	
M = male	M
F = female	F
CONNECTOR TYPE	
V = inline	V
P = panel	P
COUPLING TERMINATION	
- = with ramps (4 - 8 - 19 pins) or thread (16 pins)	-
H = aluminium locking ring	H
R = rubber coated locking ring	R
CONTACT PLATING TYPE	
S = silver (4-8-16-19 pin)	S
G = gold (4-8-16-19 pin)	G
N = no contact	N
CONTACT TERMINATION	
C = crimp	C
S = solder	S
N = no contact	N
CABLE GLAND (more options available)	
METRIC: M 20 x 1.5 - Ø cable 10 - 14 mm (SPK 4 / SVK 19 pin)	MI
METRIC: M 25 x 1.5 - Ø cable 13 - 18 mm (SVK 19 pin)	ML
METRIC: M 32 x 1.5 - Ø cable 11 - 21 mm (SPK 8 pin)	MM
METRIC: M 40 x 1.5 - Ø cable 19 - 28 mm (SSX 16 pin)	MP
CABLE CLAMP TYPE	
N = normal	N
SPECIAL VERSION (upon request)	
For example: T = pre-installed solder contacts	T
RUBBER COATED LOCKING RING COLOR	
0 = Black (standard)	0
1 = Green	1
2 = Red	2
3 = Yellow	3
4 = Blue	4



CHOOSE THE SPEAKER CABLE SUITABLE FOR YOUR CONNECTORS



7Z2SX40



7Z4SX25



7Z8SX25



7Z16SX40



Scan and access the Syntax Cable web page

VALENTINI

www.syntaxnet.it
info@syntaxnet.it
Tel. +39 0119594160
Fax +39 0119594166
via Asti 84/A
10098 Rivoli
(TO) - ITALY

SYNTAX[®]
is a VALENTINI Trade Mark

Scan and see
the latest updates on
www.syntaxnet.it



M32x1.5 6G

1 7/8 UN-28

∅ 40

∅ 50

∅ 53 Godronatura